



TOOLS & PARTS LIST

- Valves Seat Inserts
- Valves Seal Drivers
- Reamers



AV&V Valve Seat Inserts

AV&V valve seats are made from a highly alloyed material and feature the following :

- Easy oversize identification by the part number
- Easy to machine with cutter and stone

- Resists severe pounding and dissipates heat better
- Work-hardens during running-in
- Radiused for easier installation



Valves Seats		AV1630
Description		
O.D.	I.D.	<ul style="list-style-type: none"> • Machining may be required • For all cylinder head models • High chrome steel alloy
1.630"	1.180"	
Thickness		
.385"		



Valves Seats		AV1732
Description		
O.D.	I.D.	<ul style="list-style-type: none"> • Machining may be required • For all cylinder head models • High chrome steel alloy • For Milwaukee Eight
1.732"	0.299"	
Thickness		
.939"		



Valves Seats		AV1757
Description		
O.D.	I.D.	<ul style="list-style-type: none"> • Machining may be required • For all cylinder head models • High chrome steel alloy
1.757"	1.410"	
Thickness		
.430"		



Valves Seats		AV1757S
Description		
O.D.	I.D.	<ul style="list-style-type: none"> • No machining required • For all cylinder head models • High chrome steel alloy • Ideal size for 900 and 1000 Iron Head Sportster® (Exhaust)
1.757"	1.371"	
Thickness		
.315"		



Valves Seats		AV1820
Description		
O.D.	I.D.	<ul style="list-style-type: none"> • Machining may be required • For all cylinder head models • High chrome steel alloy • Universal repair seat
1.820"	1.375"	
Thickness		
.450"		



Valves Seats		AV1880
Description		
O.D.	I.D.	<ul style="list-style-type: none"> • Machining may be required • For all cylinder head models • High chrome steel alloy • Universal repair seat
1.880"	1.435"	
Thickness		
.410"		



Valves Seats		AV1882
Description		
O.D.	I.D.	<ul style="list-style-type: none"> • Machining may be required • For all cylinder head models • High chrome steel alloy
1.882"	1.530"	
Thickness		
.410"		



Valves Seats		AV1944
Description		
O.D.	I.D.	<ul style="list-style-type: none"> • No machining required • High chrome steel alloy • Stock replacement for Shovel Head® (exhaust)
1.944"	1.575"	
Thickness		
.400"		



Valves Seats		AV1945
Description		
O.D.	I.D.	<ul style="list-style-type: none"> • Machining may be required • For all cylinder head models • High chrome steel alloy • Universal repair seat
1.945"	1.375"	
Thickness		
.440"		



Valves Seats		AV2008
Description		
O.D.	I.D.	<ul style="list-style-type: none"> • Machining may be required • For all cylinder head models • High chrome steel alloy
2.008"	1.610"	
Thickness		
.440"		

AV&V Valve Seat Inserts

AV&V valve seats are made from a highly alloyed material and feature the following :

- Easy oversize identification by the part number
- Easy to machine with cutter and stone

- Resists severe pounding and dissipates heat better
- Work-hardens during running-in
- Radiused for easier installation



Valves Seats		AV2040
Description		
O.D.	I.D.	<ul style="list-style-type: none"> • Machining may be required • For all cylinder head models • High chrome steel alloy
2.040"	1.700"	
Thickness		
		.425"



Valves Seats		AV2068
Description		
O.D.	I.D.	<ul style="list-style-type: none"> • No machining required • For all cylinder head models • High chrome steel alloy • Ideal size for 1000 Iron Head Sportster® (Intake)
2.068"	1.750"	
Thickness		
		.315"



Valves Seats		AV2070
Description		
O.D.	I.D.	<ul style="list-style-type: none"> • Machining may be required • For all cylinder head models • High chrome steel alloy
2.070"	1.610"	
Thickness		
		.460"



Valves Seats		AV2132
Description		
O.D.	I.D.	<ul style="list-style-type: none"> • Machining may be required • For all cylinder head models • High chrome steel alloy • Best suited for AV&V 1990 and 1980-7TGB (intake valves)
2.132"	1.800"	
Thickness		
		.460"



Valves Seats		AV2135
Description		
O.D.	I.D.	<ul style="list-style-type: none"> • No machining required • For all cylinder head models • High chrome steel alloy • Replacement valve seat for Shovel Head® (intake)
2.135"	1.750"	
Thickness		
		.400"



Valves Seats		AV2163
Description		
O.D.	I.D.	<ul style="list-style-type: none"> • Machining may be required • For all cylinder head models • High chrome steel alloy
2.163"	1.750"	
Thickness		
		.410"



Valves Seats		AV2257
Description		
O.D.	I.D.	<ul style="list-style-type: none"> • Machining may be required • For all cylinder head models • High chrome steel alloy • Universal repair seat
2.257"	1.550"	
Thickness		
		.500"



Valves Seats		VS46
Description		
O.D.	I.D.	<ul style="list-style-type: none"> • Machining may be required • For all cylinder head models • High chrome steel alloy • For Milwaukee Eight
1.381"	.875"	
Thickness		
		.437"

AV&V Valve Seal Drivers

- Allows easier and more precise installation of both O.E. or viton valve seals.
- Valve seal is installed in centerline with the guide.
- Prevent costly comeback caused by a loose seal.



Aluminium		VSD6MM	
Description			
I.D.	Driving Section I.D.	Handle	OAL
.238"	.400"	.990"	3.500"
Application			
For 6mm valve seals (V-Rod®)			



Aluminium		VSD7MM	
Description			
I.D.	Driving Section I.D.	Handle	OAL
.277"	.480"	.990"	3.500"
Application			
For all 7mm valve seals (Twin Cam®, Evo® and Sportster®)			



Aluminium		VSD312	
Description			
I.D.	Driving Section I.D.	Handle	OAL
.315"	.515"	.990"	3.500"
Application			
For all 5/16 valve seals (Twin Cam®, Evo® and Sportster®)			



Aluminium		VSD343	
Description			
I.D.	Driving Section I.D.	Handle	OAL
.343"	.540"	.990"	3.500"
Application			
For all 11/32 valve seals (Iron-Sportster®)			



Aluminium		VSD378	
Description			
I.D.	Driving Section I.D.	Handle	OAL
.380"	.550"	.990"	3.500"
Application			
For all 3/8 valve seals (Shovel Head®)			



Plastic		VSDR	
Application			
For OE Style seal K312420			



Plastic		VSDW	
Application			
For OE Style seal K375625 (Shovel Head® 1340)			

AV&V Solid Carbide Valve Guide Reamers

- Specially designed by AV&V for use with manganese bronze material, these unique self centering reamers feature a unique design with a long pilot for a perfect alignment with the valve guide while reaming.
- Do not use with cast iron guides
- You will ream a valve guide to exact dimension without any taper in 4 to 5 seconds only.
- Guides will last longer than with the honing method because there is no crosshatch left after reaming.
- One size allows you to fit both intake & exhaust if you use AV&V valves & guides.



Reamer	VGRC6MM	
Diameter	Material	Application
6MM	Solid Carbide	6MM stem valve (V-ROD® and Milwaukee Eight)



Reamer	VGRC2766	
Diameter	Material	Application
.2766"	Solid Carbide	*7MM Twin Cam® and Sportster®



Reamer	VGRC3110	
Diameter	Material	Application
.3110"	Solid Carbide	**Evolution®, Twin Cam® and Sportster®



Reamer	VGRC3115	
Diameter	Material	Application
.3115"	Solid Carbide	**Evolution®, Twin Cam® and Sportster®



Reamer	VGRC3120	
Diameter	Material	Application
.3120"	Solid Carbide	Evolution®, Twin Cam® and Sportster®



Reamer	VGRC3777	
Diameter	Material	Application
.3777"	Solid Carbide	For OE 3/8 stem valves PAN® / SHOVEL®



Reamer	VGRC3782	
Diameter	Material	Application
.3782"	Solid Carbide	***For AV&V 3/8 stem valves PAN® / SHOVEL®

- * Harley-Davidson® 7MM valve guides I.D. are actually 7MM+.001" (.2766")
- ** Recommended size for all Evolution® / Twin Cam® AV&V 5/16 valves
- *** Recommended size for all Pan Head® / Shovel Head® AV&V valves

Part Numbers - Valves

PART NUMBER	TYPE	HEAD DIA.	OVERALL LENGTH	STEM DIA.	COATING	TIP LENGTH	GROOVE	PAGE
AV33	Exhaust	33MM	4.045"	.2346"	Black	.093"	Triple	84
AV33-030	Exhaust	33MM	4.075"	.2346"	Black	.123"	Triple	84
AV34-6TGC	Exhaust	34.4MM	116.9MM	.2346"	Chrome	.070"	Triple	78
AV35-6TGC	Exhaust	35.4MM	116.9MM	.2346"	Chrome	.070"	Triple	78
AV40-6TGC	Intake	40MM	116.28MM	.2351"	Chrome	.070"	Triple	78
AV41	Intake	41MM	4.025"	.2351"	Black	.093"	Triple	84
AV41-030	Intake	41MM	4.055"	.2351"	Black	.123"	Triple	84
AV41-6TGC	Intake	41MM	116.28MM	.2351"	Chrome	.070"	Triple	78
AV1355	Exhaust	1.355"	4.635"	.3106"	Black nitride	.200"	Single	47
AV1480	Exhaust	1.480"	4.640"	.3106"	Black nitride	.200"	Single	44
AV1485	Exhaust	1.485"	4.560"	.3106"	Black nitride	.200"	Single	44-47
AV1485-7TGB	Exhaust	1.485"	4.680"	.2755"	Black nitride	.085"	Triple	46
AV1575-7TGB	Exhaust	1.575"	4.560"	.2755"	Black nitride	.085"	Triple	15
AV1575-7TGC	Exhaust	1.575"	4.560"	.2755"	Chrome	.085"	Triple	15
AV1576-7TGB	Exhaust	1.575"	4.620"	.2755"	Black nitride	.085"	Triple	48
AV1580	Exhaust	1.580"	4.575"	.3106"	chrome	.200"	Single	44
AV1585	Exhaust	1.585"	4.505"	.3106"	Black nitride	.200"	Single	6
AV1590	Intake	1.590"	4.550"	.3108"	Black nitride	.200"	Single	48
AV1610D	Exhaust	1.610"	4.510"	.3106"	Black nitride	.200"	Single	6
AV1610S	Exhaust	1.610"	4.565"	.3106"	Black nitride	.200"	Single	6
AV1610-7TGB	Exhaust	1.610"	4.545"	.2755"	Black nitride	.085"	Triple	12
AV1610-7TGC	Exhaust	1.610"	4.545"	.2755"	Chrome	.085"	Triple	12
AV1650	Exhaust	1.650"	4.515"	.3106"	Black nitride	.200"	Single	6
AV1700A	Exhaust	1.700"	4.510"	.3106"	Black nitride	.2205"	Single	7-28
AV1700BC	Exhaust	1.700"	5.700"	.3106"	Chrome	---	---	33
AV1700C	Exhaust	1.700"	4.445"	.3106"	Chrome	.200"	Single	7-29
AV1700U	Exhaust	1.700"	4.655"	.3106"	Black nitride	.200"	Single	7-29
AV1720	Intake	1.720"	4.560"	.3108"	Black nitride	.200"	Single	45
AV1720B	Intake	1.720"	4.480"	.3108"	Black nitride	.200"	Single	44-48
AV1725-7TGB	Intake	1.725"	4.580"	.2757"	Black nitride	.085"	Triple	46
AV1770	Intake	1.770"	4.480"	.3108"	Black nitride	.200"	Single	45
AV1810-7TGB	Intake	1.810"	4.455"	.2757"	Black nitride	.085"	Triple	15
AV1810-7TGC	Intake	1.810"	4.455"	.2757"	Chrome	.085"	Triple	15
AV1811-7TGB	Intake	1.810"	4.480"	.2757"	Black nitride	.085"	Triple	46
AV1813	Intake	1.812"	4.485"	.3108"	Chrome	.200"	Single	45
AV1850-7TGB	Intake	1.850"	4.455"	.2757"	Black nitride	.085"	Triple	12
AV1850-7TGC	Intake	1.850"	4.455"	.2757"	Chrome	.085"	Triple	12
AV1851	Intake	1.851"	4.485"	.3108"	Chrome	.200"	Single	45
AV1851-7TGB	Intake	1.851"	4.520"	.2757"	Black nitride	.085"	Triple	47
AV1900	Intake	1.900"	4.440"	.3108"	Black nitride	.200"	Single	7-29
AV1900-7TGB	Intake	1.900"	4.445"	.2757"	Black nitride	.085"	Triple	13
AV1900-7TGC	Intake	1.900"	4.445"	.2757"	Chrome	.085"	Triple	13
AV1900S	Intake	1.900"	4.415"	.3108"	Black nitride	.200"	Single	8-30
AV1940	Intake	1.940"	4.440"	.3108"	Black nitride	.200"	Single	8-30
AV1980-7TGB	Intake	1.980"	4.455"	.2757"	Black nitride	.085"	Triple	13
AV1990	Intake	1.990"	4.440"	.3108"	Black nitride	.200"	Single	8-30

Part Numbers - Valves

PART NUMBER	TYPE	HEAD DIA.	OVERALL LENGTH	STEM DIA.	COATING	TIP LENGTH	GROOVE	PAGE
AV2020	Intake	2.020"	4.490"	.3108"	Chrome	.200"	Single	9-31
AV2020A	Intake	2.020"	4.440"	.3108"	Black nitride	.200"	Single	8-30
AV2020S	Intake	2.020"	4.510"	.3108"	Black nitride	.200"	Single	9-31
AV2060LC	Intake	2.060"	4.510"	.3108"	Chrome	.200"	Single	9-31
AV2100	Intake	2.100"	4.475"	.3108"	Black nitride	.200"	Single	9-31
AV2100BC	Intake	2.100"	5.700"	.3108"	Chrome	---	---	10-32
AV2100S	Intake	2.100"	4.570"	.3108"	Chrome	.200"	Single	10-32
AV2100U	Intake	2.100"	4.590"	.3108"	Black nitride	.200"	Single	10-32
AV2150	Intake	2.150"	4.480"	.3108"	Chrome	.200"	Single	10-32
AV2200BC	Intake	2.200"	5.700"	.3108"	Chrome	---	---	11-33
HD03	Exhaust	1.561"	3.505"	.3389"	Black nitride	.155"	Single	74
HD04	Intake	1.812"	3.615"	.3108"	Black nitride	.200"	Single	74
HD05	Intake	1.940"	3.615"	.3108"	Black nitride	.200"	Single	74
HD07	Exhaust	1.750"	3.830"	.3764"	Black nitride	.200"	Single	60-68
HD09	Intake	1.955"	3.875"	.3770"	Black nitride	.200"	Single	60
HD10	Exhaust	1.615"	4.525"	.3106"	Black nitride	.200"	Single	34
HD11	Intake	1.845"	4.440"	.3108"	Black nitride	.200"	Single	14-34
HD12	Exhaust	1.570"	4.525"	.3106"	Black nitride	.200"	Single	14

Part Numbers - Valve Guides

PART NUMBER	TYPE	O.D.	I.D.	Oversize	Overall Length	PAGE
UVG7MM	---	.740"	.273"	---	2.700"	17-50
UVG308	---	.740"	.308"	---	2.700"	17-36-50
UVG375	---	.740"	.375"	---	2.700"	62-69
UVG6MM	---	.620"	5.9MM	---	2.375"	80
VG5100C	Intake	.5645"	.308"	Std	1.750"	75
VG5101C	Intake	.5655"	.308"	.001"	1.750"	75
VG5102C	Intake	.5665"	.308"	.002"	1.750"	75
VG5103C	Intake	.5675"	.308"	.003"	1.750"	75
VG5200C	Exhaust	.5645"	.338"	Std	1.750"	75
VG5201C	Exhaust	.5655"	.338"	.001"	1.750"	75
VG5202C	Exhaust	.5665"	.338"	.002"	1.750"	75
VG5203C	Exhaust	.5675"	.338"	.003"	1.750"	75
VG5300	Exhaust - Intake	.5660"	.375"	Std	1.900"	61-68
VG5301	Exhaust - Intake	.5670"	.375"	.001"	1.900"	61-68
VG5302	Exhaust - Intake	.5680"	.375"	.002"	1.900"	61-68
VG5303	Exhaust - Intake	.5690"	.375"	.003"	1.900"	61-68
VG5304	Exhaust - Intake	.5700"	.375"	.004"	1.900"	61-68
VG5305	Exhaust - Intake	.5710"	.375"	.005"	1.900"	61-68
VG5306	Exhaust - Intake	.5720"	.375"	.006"	1.900"	61-68
VG5308	Exhaust - Intake	.5740"	.375"	.008"	1.900"	61-68
VG5310	Exhaust - Intake	.5760"	.375"	.010"	1.900"	61-68
VG5315	Exhaust - Intake	.5810"	.375"	.015"	1.900"	61-68
VG5325	Exhaust - Intake	.5910"	.375"	.025"	1.900"	61-68
VG5400	Exhaust - Intake	.6250"	.375"	Std	1.900"	61

Part Numbers - Valve Guides

PART NUMBER	TYPE	O.D.	I.D.	Oversize	Overall Length	PAGE
VG5401	Exhaust - Intake	.6260"	.375"	.001"	1.900"	61
VG5402	Exhaust - Intake	.6270"	.375"	.002"	1.900"	61
VG5403	Exhaust - Intake	.6280"	.375"	.003"	1.900"	61
VG5404	Exhaust - Intake	.6290"	.375"	.004"	1.900"	61
VG5405	Exhaust - Intake	.6300"	.375"	.005"	1.900"	61
VG5406	Exhaust - Intake	.6310"	.375"	.006"	1.900"	61
VG5410	Exhaust - Intake	.6350"	.375"	.010"	1.900"	61
VG5415	Exhaust - Intake	.6400"	.375"	.015"	1.900"	61
VG5425	Exhaust - Intake	.6500"	.375"	.025"	1.900"	61
VG5500	Exhaust - Intake	.5625"	.308"	Std	2.250"	16-35-49
VG5501	Exhaust - Intake	.5635"	.308"	.001"	2.250"	16-35-49
VG5502	Exhaust - Intake	.5645"	.308"	.002"	2.250"	16-35-49
VG5503	Exhaust - Intake	.5655"	.308"	.003"	2.250"	16-35-49
VG5504	Exhaust - Intake	.5665"	.308"	.004"	2.250"	16-35-49
VG5525	Exhaust - Intake	.5875"	.308"	.025"	2.250"	16-35-49
VG5600	Intake	.5625"	.308"	Std	2.100"	16-35-49
VG5600S	Intake	.5625"	.308"	Std	2.100"	16-35-49
VG5600-5S	Intake	.5630"	.308"	.0005"	2.100"	16-35-49
VG5601	Intake	.5635"	.308"	.001"	2.100"	16-35-49
VG5601S	Intake	.5635"	.308"	.001"	2.100"	16-35-49
VG5602	Intake	.5645"	.308"	.002"	2.100"	16-35-49
VG5603	Intake	.5655"	.308"	.003"	2.100"	16-35-49
VG5604	Intake	.5665"	.308"	.004"	2.100"	16-35-49
VG5605	Intake	.5675"	.308"	.005"	2.100"	16-35-49
VG5606	Intake	.5685"	.308"	.006"	2.100"	16-35-49
VG5610	Intake	.5725"	.308"	.010"	2.100"	16-35-49
VG5625	Intake	.5875"	.308"	.025"	2.100"	16-35-49
VG5700	Exhaust	.5625"	.308"	Std	2.100"	16-35-49
VG5700S	Exhaust	.5625"	.308"	Std	2.100"	16-35-49
VG5700-5S	Exhaust	.5630"	.308"	.0005"	2.100"	16-35-49
VG5701	Exhaust	.5635"	.308"	.001"	2.100"	16-35-49
VG5701S	Exhaust	.5635"	.308"	.001"	2.100"	16-35-49
VG5702	Exhaust	.5645"	.308"	.002"	2.100"	16-35-49
VG5703	Exhaust	.5655"	.308"	.003"	2.100"	16-35-49
VG5704	Exhaust	.5665"	.308"	.004"	2.100"	16-35-49
VG5705	Exhaust	.5675"	.308"	.005"	2.100"	16-35-49
VG5706	Exhaust	.5685"	.308"	.006"	2.100"	16-35-49
VG5710	Exhaust	.5725"	.308"	.010"	2.100"	16-35-49
VG5725	Exhaust	.5875"	.308"	.025"	2.100"	16-35-49
VG6600	Intake	.5625"	.273"	Std	2.040"	17-50
VG6601	Intake	.5635"	.273"	.001"	2.040"	17-50
VG6602	Intake	.5645"	.273"	.002"	2.040"	17-50
VG6603	Intake	.5655"	.273"	.003"	2.040"	17-50
VG6604	Intake	.5665"	.273"	.004"	2.040"	17-50
VG6605	Intake	.5675"	.273"	.005"	2.040"	17-50
VG6606	Intake	.5685"	.273"	.006"	2.040"	17-50

Part Numbers - Valve Guides

PART NUMBER	TYPE	O.D.	I.D.	Overize	Overall Length	PAGE
VG6610	Intake	.5725"	.273"	.010"	2.040"	17-50
VG6625	Intake	.5875"	.273"	.025"	2.040"	17-50
VG6700	Exhaust	.5625"	.273"	Std	2.040"	17-50
VG6701	Exhaust	.5635"	.273"	.001"	2.040"	17-50
VG6702	Exhaust	.5645"	.273"	.002"	2.040"	17-50
VG6703	Exhaust	.5655"	.273"	.003"	2.040"	17-50
VG6704	Exhaust	.5665"	.273"	.004"	2.040"	17-50
VG6705	Exhaust	.5675"	.273"	.005"	2.040"	17-50
VG6706	Exhaust	.5685"	.273"	.006"	2.040"	17-50
VG6710	Exhaust	.5725"	.273"	.010"	2.040"	17-50
VG6725	Exhaust	.5875"	.273"	.025"	2.040"	17-50
VG7000	Exhaust-Intake	.3955"	5.9MM	Std	1.950"	80
VG7001	Exhaust-Intake	.3965"	5.9MM	.001"	1.950"	80
VG7002	Exhaust-Intake	.3975"	5.9MM	.002"	1.950"	80
VG7003	Exhaust-Intake	.3985"	5.9MM	.003"	1.950"	80
VG8000-8100	Exhaust-Intake	.4750"	5.9MM	Std	1.655"	85
VG8001-8101	Exhaust-Intake	.4758"	5.9MM	.001"	1.655"	85

Part Numbers - Valve Seals

PART NUMBER	TYPE	Stem Dia.	Seal Section O.D.	PAGE
K312420-4	O.E. Style	5/16"	.421"	18-36-51
K312530-4	O.E. Style	5/16"	.531"	18-36-51-75
K341530-4	O.E. Style	11/32"	.530"	75
K375562	O.E. Style	3/8"	.562"	62-69
K375625-4	O.E. Style	3/8"	.625"	62
V312421-4	Viton	5/16"	.421"	18-36-51
V312531-4	Viton	5/16"	.531"	18-36-51
V6MM-4	Viton	6MM	.335"	80
V6MMOE	O.E. Style	6MM	.335"	80
V7MM-4	Viton	7MM	.562"	18-51
V7MMOE-4	Viton	7MM	.562"	18-51

Part Numbers - Valve Spring Kits

PART NUMBER	MAX. RECOM- MENDED LIFT	SEAT PRESSURE	OPEN PRESSURE	COIL BIND HEIGHT	O.D.	I.D.	Type	PAGE
VSK470	.470"	155 lbs @ 1.375"	300 lbs @ .980"	.850"	1.640"	1.010"	Double	64-70
VSK530	.530"	155 lbs @ 1.455"	320 lbs @ .980"	.980"	1.640"	.970"	Double	64-70
VSK590	.625"	175 lbs @ 1.455"	350 lbs @ .980"	.850"	1.625"	.965"	Double	65-71
VSK600S	.600"	155 lbs @ 1.885"	405 lbs @ 1.260"	1.080"	1.460"	.790"	Double	20-38-53
VSK600T	.600"	155 lbs @ 1.885"	405 lbs @ 1.260"	1.080"	1.460"	.790"	Double	20-38-53
VSK650S	.650"	185 lbs @ 1.860"	460 lbs @ 1.160"	1.080"	1.460"	.790"	Double	21-39-54
VSK650T	.650"	185 lbs @ 1.860"	460 lbs @ 1.160"	1.080"	1.460"	.790"	Double	21-39-54
VSK675T	.675"	185 lbs @ 1.860"	460 lbs @ 1.160"	1.080"	1.460"	.790"	Double	22-40-55
VSK6000	.600"	165 lbs @ 1.860"	384 lbs @ 1.250"	1.200"	---	---	Beehive	22-40-55
VSK6000-7SG	.600"	165 lbs @ 1.860"	384 lbs @ 1.250"	1.200"	---	---	Beehive	24-57
VSK6500	.650"	178 lbs @ 1.860"	385 lbs @ 1.200"	1.150"	---	---	Beehive	23-40-56
VSK6500-7SG	.650"	178 lbs @ 1.860"	385 lbs @ 1.200"	1.150"	---	---	Beehive	24-57
VSK7000TG	.580"	95 lbs @ 1.500"	290 lbs @ .900"	.870"	1.100"	.750"	Beehive	81

AV&V™ Manufacturer of High Performance Valvetrain Components

Part Numbers - Valve Spring Kits

PART NUMBER	MAX. RECOM- MENDED LIFT	SEAT PRESSURE	OPEN PRESSURE	COIL BIND HEIGHT	O.D.	I.D.	Type	PAGE
VSK7000SG	.580"	95 lbs @ 1.500"	290 lbs @ .900"	.870"	1.100"	.750"	Beehive	81
VSK7000SGT	.580"	95 lbs @ 1.500"	290 lbs @ .900"	.870"	1.100"	.750"	Beehive	82
VSK8000GT	.580"	75 lbs @ 1.570"	250 lbs @ .990"	.855"	1.100"	.750"	Beehive	86

Part Numbers - Springs

PART NUMBER	MAX. RECOM- MENDED LIFT	SEAT PRESSURE	OPEN PRESSURE	COIL BIND HEIGHT	O.D.	I.D.	Type	PAGE
S470-4	.470"	155 lbs @ 1.375"	300 lbs @ .980"	.850"	1.640"	1.010"	Double	64-70
S530-4	.530"	155 lbs @ 1.455"	320 lbs @ .980"	.980"	1.640"	.970"	Double	64-70
S590-4	.625"	175 lbs @ 1.455"	350 lbs @ .980"	.850"	1.625"	.965"	Double	64-71
S600-4	.600"	155 lbs @ 1.885"	405 lbs @ 1.260"	1.080"	1.460"	.790"	Double	20-38-53
S650-4	.650"	185 lbs @ 1.860"	460 lbs @ 1.160"	1.080"	1.460"	.790"	Double	21-39-54
S675-4	.675"	185 lbs @ 1.860"	460 lbs @ 1.160"	1.080"	1.460"	.790"	Double	22-40-55
S6000-4	.600"	165 lbs @ 1.860"	384 lbs @ 1.250"	1.200"	---	---	Beehive	22-24-40-55-57
S6500-4	.650"	178 lbs @ 1.860"	385 lbs @ 1.200"	1.150"	---	---	Beehive	23-24-41-56-57
S7000-8	.580"	83 lbs @ 1.500"	280 lbs @ .900"	.870"	1.100"	.750"	Beehive	81-82
S7000-8	.580"	75 lbs @ 1.570"	250 lbs @ .990"	.855"	1.100"	.750"	Beehive	86

Part Numbers - Retainer

PART NUMBER	ALLOY	TRAITEMENT	ANGLE	PAGE
R311CS-4	4140 Chromely Steel	Black Oxyde	10°	20-21-38-39-53-54
R311CT-4	Titanium	---	10°	20-21-22-38-39-40-53-54-55
R530-4	4140 Chromely Steel	Black Oxyde	15°	64-65-70-71
R6000-4	4140 Chromely Steel	Black Oxyde	9°	22-40-55
R60007SG-4	4140 Chromely Steel	Black Oxyde	7°	24-57
R6500-4	4140 Chromely Steel	Black Oxyde	9°	23-24-40-56-57
R7000S	4140 Chromely Steel	Black Oxyde	7°	81
R7000T	Titanium	---	7°	82
R8000	4140 Chromely Steel	Black Oxyde	7°	

Part Numbers - Lower Collar

PART NUMBER	THICKNESS	O.D.	I.D.	ALLOY	PAGE
LSC530-4	.055" / .0180"	1.495"	.755"	Heat Treated Steel	64-65-70-71
LSC600-4	.040"	1.418"	.562"	Heat Treated Steel	20-21-22-38-39-40-53-54-55
LSC6000-4	.050"	1.425"	.565"	Heat Treated Steel	22-24-40-55-57
LSC6500-4	.040"	1.485"	.565"	Heat Treated Steel	23-24-41-56-57

Part Numbers - Valve Locks

PART NUMBER	STEM	GROOVE	USAGE	TAPPER	PAGE
VL6MMSG	6MM	Single	V-Rod	7°	81-82
VL6MMTG	6MM	Triple	V-Rod	7°	8186
VL6MMTGC	6MM	Triple	Beehive spring	7°	86
VL7MMSG-4	7MM	Single or Triple	Beehive Spring	7°	24-57
VL7MMSGC-4	7MM	Single or Triple	Beehive Spring	9°	24-57
VL311A-4	5/16"	---	Double Spring	Jumbo 10°	20-21-22-38-39-40-53-54-55
VL311C-4	5/16"	---	Beehive Spring	9°	22-23-40-41-55-56
VL375-4	5/16"	---	Double Spring	Jumbo 15°	64-65-70-71

Part Numbers - Valve Spring Shims

PART NUMBER	THICKNESS	O.D.	I.D.	ALLOY	PAGE
VSS5015-20	.015"	1.480"	.600"	Heat Treated Steel	25-42-58
VSS5030-20	.030"	1.480"	.600"	Heat Treated Steel	25-42-58
VSS6022-20	.022"	1.010"	1.441"	Heat Treated Steel	25-42-58

Part Numbers - Valve Seat Inserts

PART NUMBER	THICKNESS	O.D.	I.D.	ALLOY	PAGE
AV1630	.385"	1.630"	1.180"	High Chrome Steel	88
AV1732	.393"	1.732"	0.299"	High Chrome Steel	88
AV1757	.430"	1.757"	1.410"	High Chrome Steel	88
AV1757S	.315"	1.757"	1.371"	High Chrome Steel	88
AV1820	.450"	1.820"	1.375"	High Chrome Steel	88
AV1880	.410"	1.880"	1.435"	High Chrome Steel	89
AV1882	.410"	1.882"	1.530"	High Chrome Steel	89
AV1944	.400"	1.944"	1.575"	High Chrome Steel	89
AV1945	.440"	1.945"	1.375"	High Chrome Steel	89
AV2008	.440"	2.008"	1.610"	High Chrome Steel	89
AV2040	.425"	2.040"	1.700"	High Chrome Steel	90
AV2068	.315"	2.068"	1.750"	High Chrome Steel	90
AV2070	.460"	2.070"	1.610"	High Chrome Steel	90
AV2132	.460"	2.132"	1.800"	High Chrome Steel	90
AV2135	.400"	2.135"	1.750"	High Chrome Steel	90
AV2163	.410"	2.163"	1.750"	High Chrome Steel	91
AV2257	.500"	2.257"	1.550"	High Chrome Steel	91
VS46	.437"	1.381"	.875"	High Chrome Steel	91

Part Numbers - Valve Seal Drivers

PART NUMBER	I.D.	DRIVING SECTION I.D.	HANDLE	OAL	ALLOY	PAGE
VSD6MM	.238"	.400"	.990"	3.500"	Aluminum	92
VSD7MM	.277"	.480"	.990"	3.500"	Aluminum	92
VSD312	.315"	.515"	.990"	3.500"	Aluminum	92
VSD343	.343"	.540"	.990"	3.500"	Aluminum	92
VSD378	.380"	.550"	.990"	3.500"	Aluminum	93
VSDR	---	---	---	---	Plastic	93
VSDW	---	---	---	---	Plastic	93

Part Numbers - Solid Carbide Valve Guide Reamers

PART NUMBER	DIAMETER	MATERIAL	PAGE	PART NUMBER	DIAMETER	MATERIAL	PAGE
VGRC6MM	6MM	Solid Carbide	94	VGRC3120	.3120"	Solid Carbide	94
VGRC2766	.2766"	Solid Carbide	94	VGRC3777	.3777"	Solid Carbide	94
VGRC3110	.3110"	Solid Carbide	94	VGRC3782	.3782"	Solid Carbide	94
VGRC3115	.3115"	Solid Carbide	94				

Part Numbers - Compression Release Valves

PART NUMBER	PROTRUSION	THREAD SECTION	THREAD	PAGE
JCR 10A	1.05"	.350"	M10x1	19-37-52-63
JCR 10B	1.38"	.350"	M10x1	19-37-52-63
JCR 10D	1.25"	.500"	M10x1	19-37-52-63

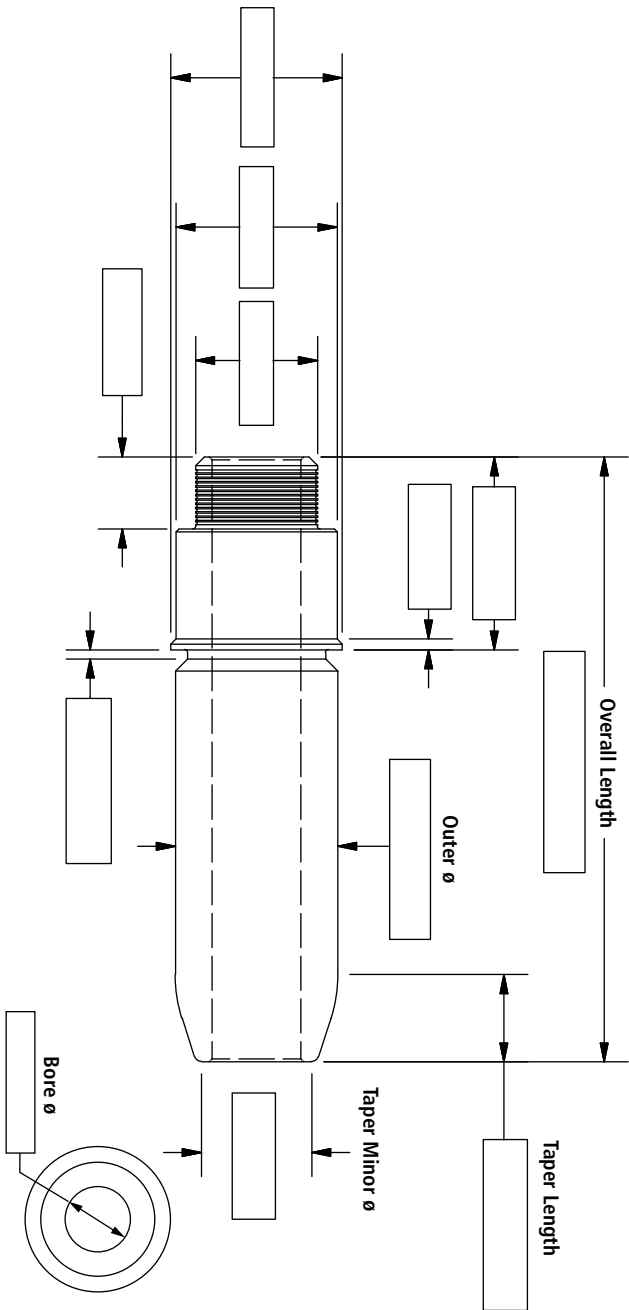


CUSTOM GUIDE ORDER FORM

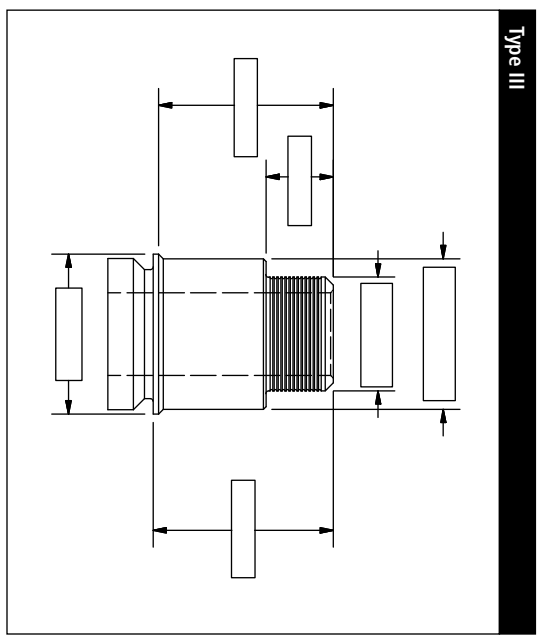
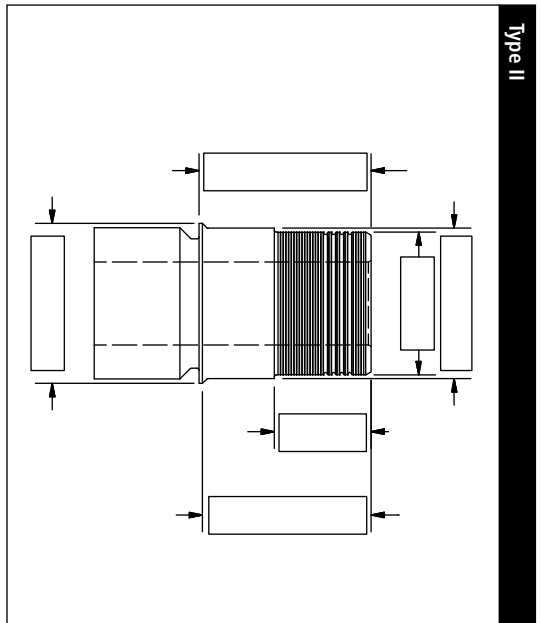
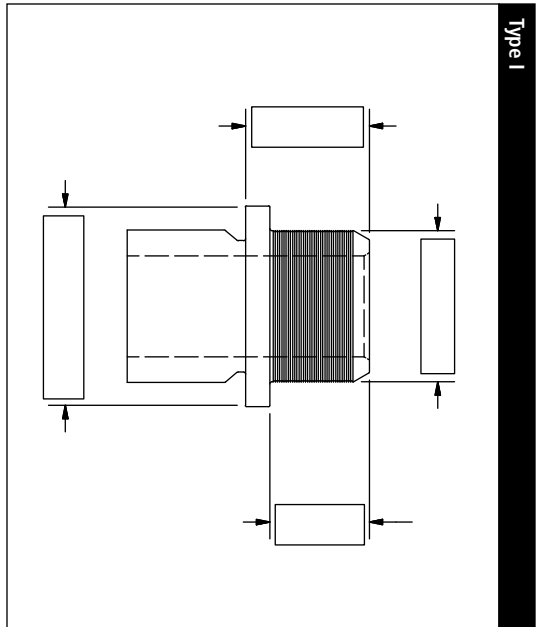
T 450.647.6650 F 450.647.1650
 info@av-v.com www.av-v.com

Make Model Disp. Years

Part Number



Customer Information	
Company	<input type="text"/>
Contact	<input type="text"/>
Phone	<input type="text"/>
Fax	<input type="text"/>
E-mail	<input type="text"/>
Date	<input type="text"/>
Material	<input type="checkbox"/> Cast Iron <input type="checkbox"/> Manganese
Note	<input type="text"/>





It always pays to buy the best

CUSTOM VALVE ORDER FORM

T 450.647.6650 F 450.647.1650
 info@av-v.com www.av-v.com

Make	Model	Disp.	Years
------	-------	-------	-------

Margin

Head ϕ

Profile Radius

Back Cut @ Back Angle

Face Width @ Face Angle

Stem ϕ

Tulip Angle or Radius

Overall Length

Additional Specifications

Rocker Arm Yes No Yes No

Intake Valve Yes No Yes No

Exhaust Valve Yes No Yes No

Using Lash Cap Yes No

Rocker Arm (w/ Elephant Foot) Yes No

Cam Follower (Shim & Bucket) Yes No

Part Number	Blank Part Number
Customer Information	
Company	
Contact	
Phone	
Fax	
E-mail	
Date	
Material	<input type="checkbox"/> S.S. <input type="checkbox"/> Ti <input type="checkbox"/> Other :
Note	

Groove Dimension	Radius Groove	Square Groove	Triple Groove
Groove Location			
Groove Minor ϕ			
Groove Width			
Groove Radius	N/A	N/A	
Groove Spacing	N/A	N/A	

Groove Location is measured from the tip of the valve to the center of the radius or to the top of the square groove (for the triple groove it is measured from the tip of the valve to the center of the middle radius).

Groove Detail (if applicable)	
A - Undercut ϕ	D - Groove ϕ
B - Undercut Length	E - Groove Width
C - Groove Location	F - Groove Radius

Dish Dimensions	
A - Dish Radius	Angle Dish
B - Dish Depth	D - Dish Depth
C - Dish Width	E - Dish Width
	F - Dish Angle

